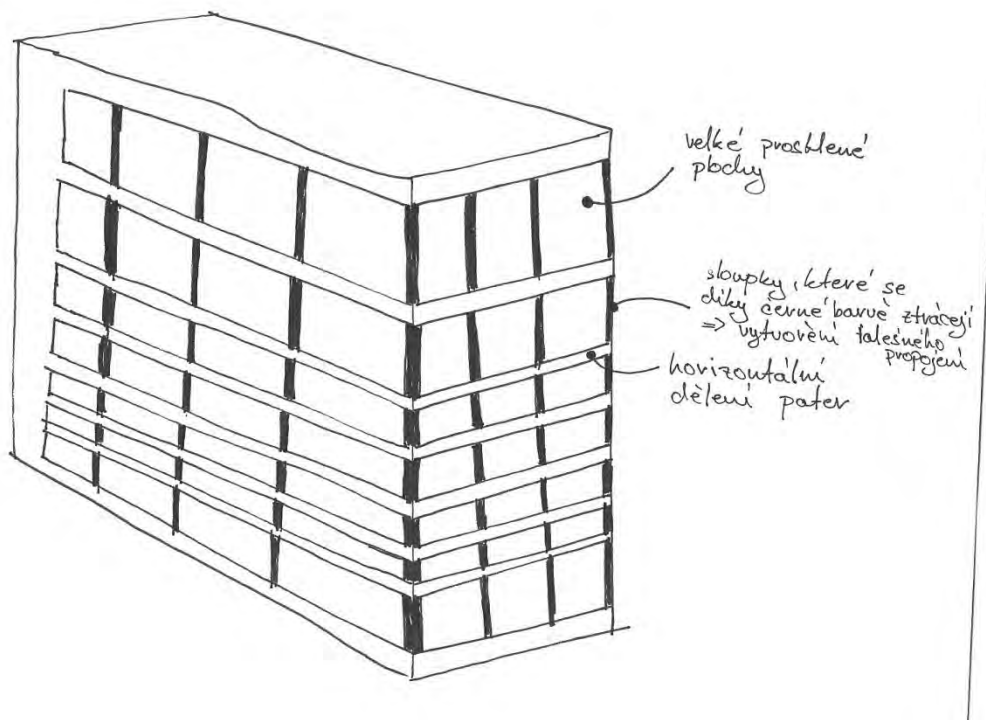
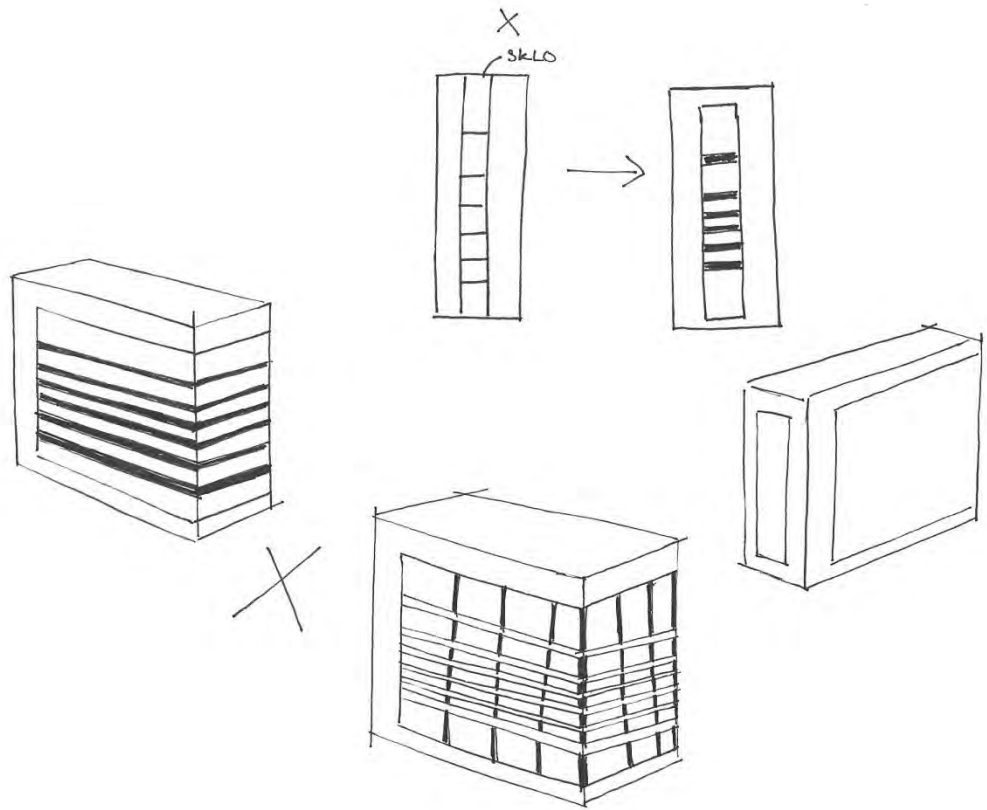
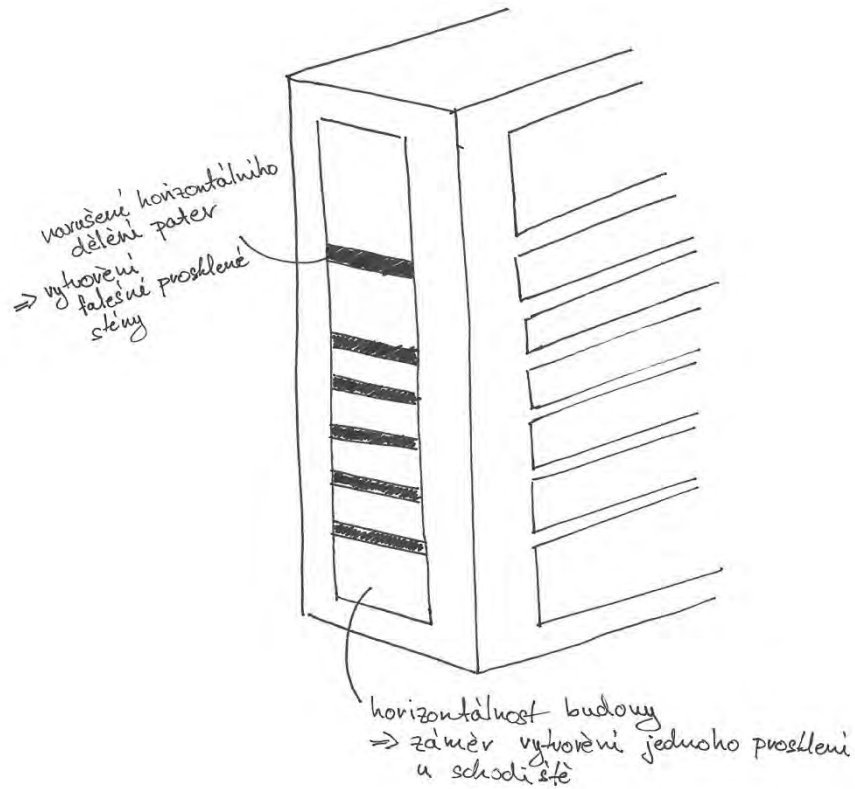


ÚLOHA 3 | KONSTRUKCE A KOMPOZICE

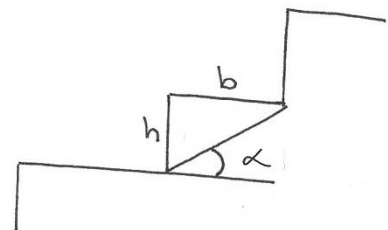




Výpočet schodiště

$$\begin{aligned}
 h &= 175 \text{ mm} & \Rightarrow & 2h + b = 630 \\
 b &= 280 \text{ mm} & & b = 630 - 2h \\
 \alpha &= 32^\circ & & \underline{b = 280 \text{ mm}}
 \end{aligned}$$

$$\begin{aligned}
 \Rightarrow \operatorname{tg} \alpha &= \frac{h}{b} \\
 \operatorname{tg} \alpha &= 0,625 \\
 \underline{\alpha} &= \underline{32^\circ}
 \end{aligned}$$



PODCHODNÁ VÝŠKA:

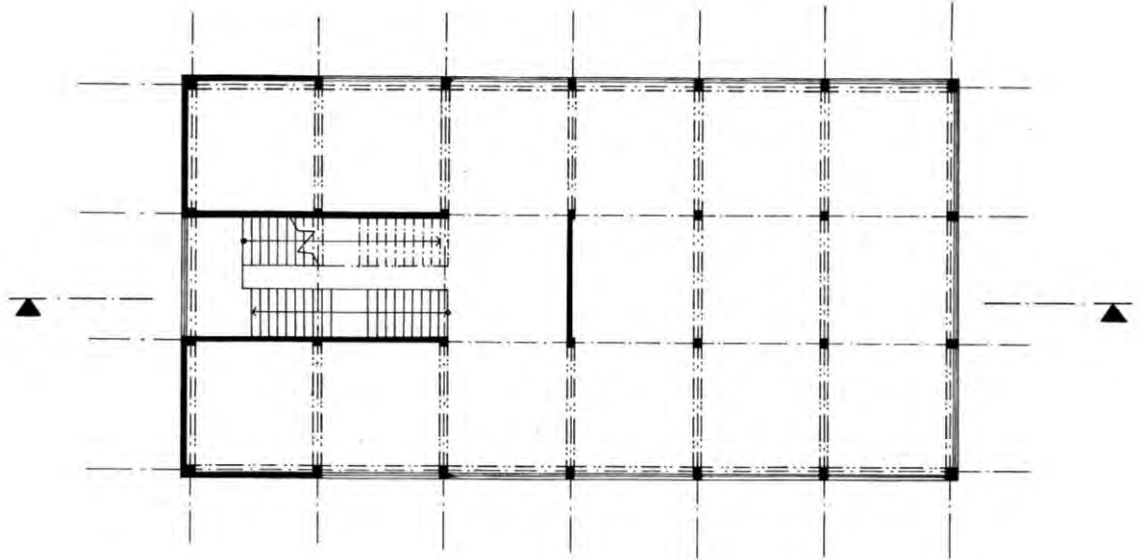
$$1500 + \frac{1750}{\cos \alpha} = \underline{\underline{2384,4 \text{ mm}}}$$

PRŮCHODNÁ VÝŠKA:

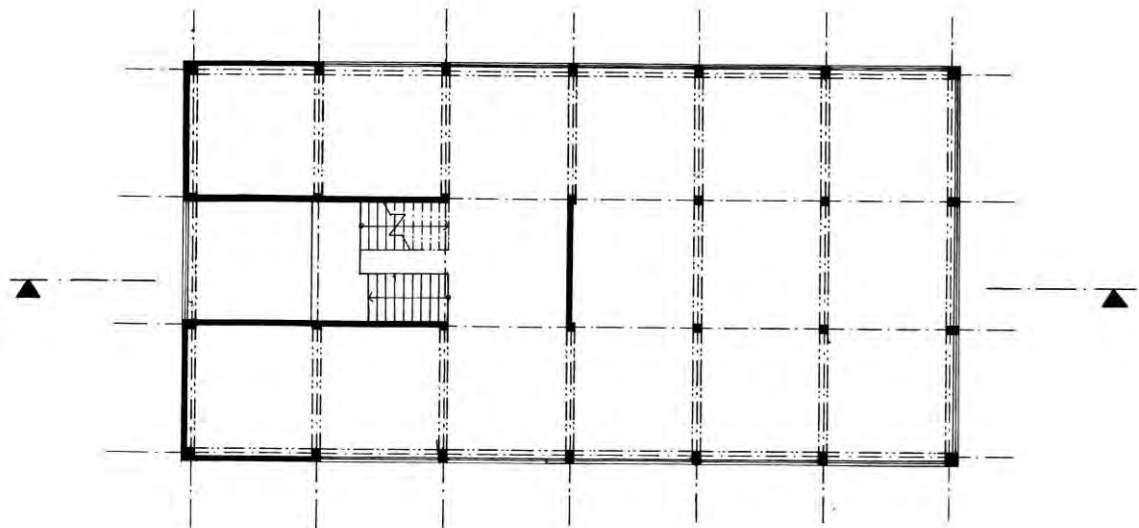
$$750 + 1500 \cdot \cos \alpha = \underline{\underline{2022,1 \text{ mm}}}$$

PŮDORYSY 1:100

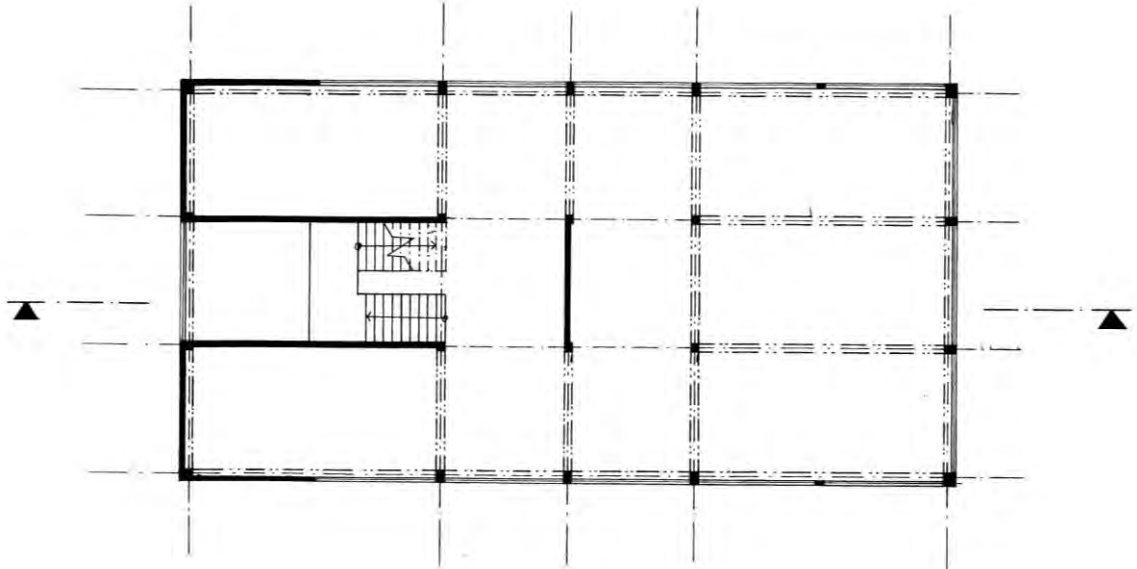
1.NP



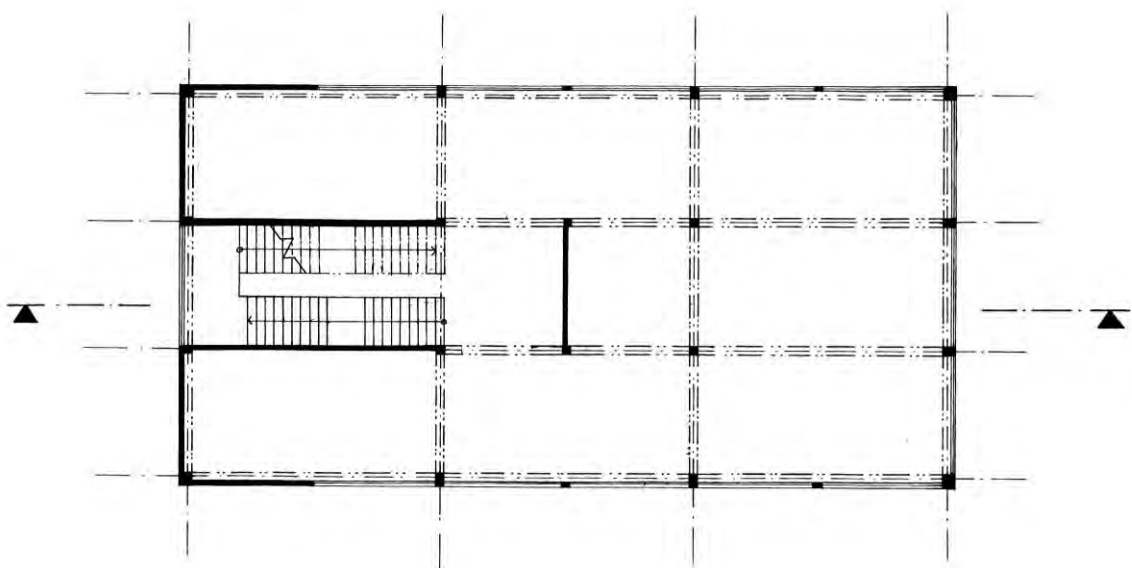
2.NP



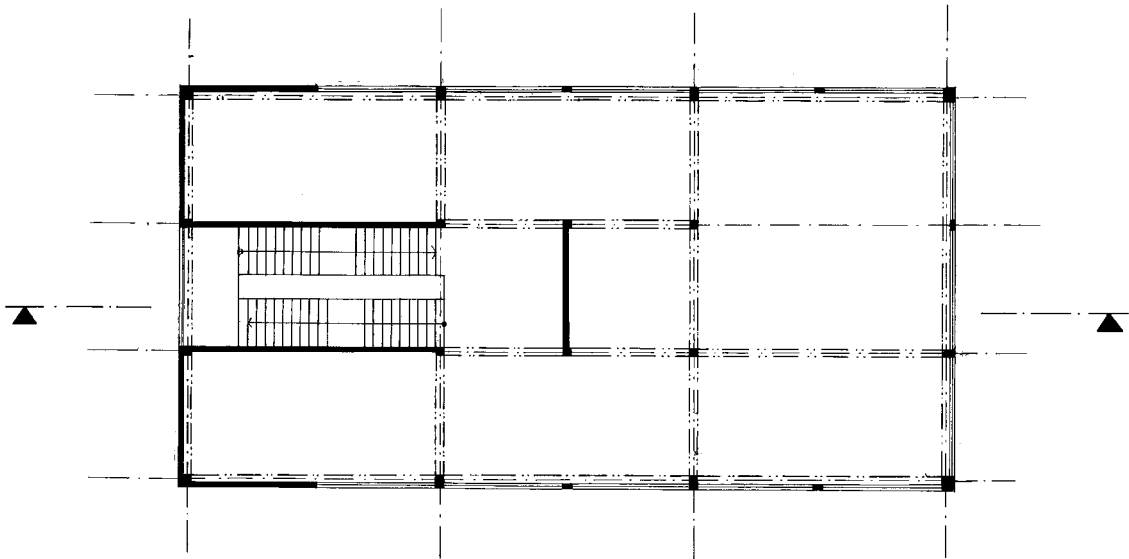
3-5.NP



6.NP

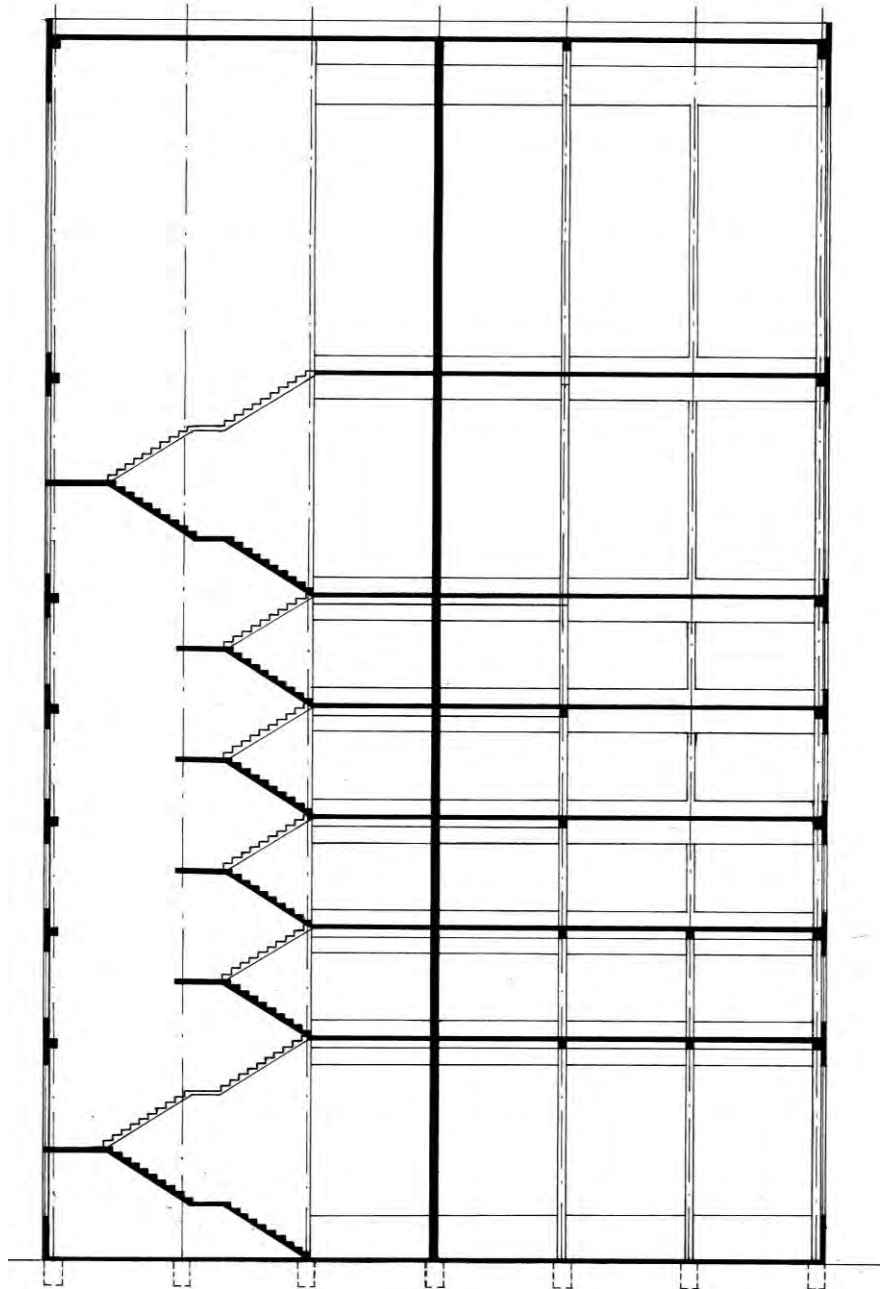


7.NP



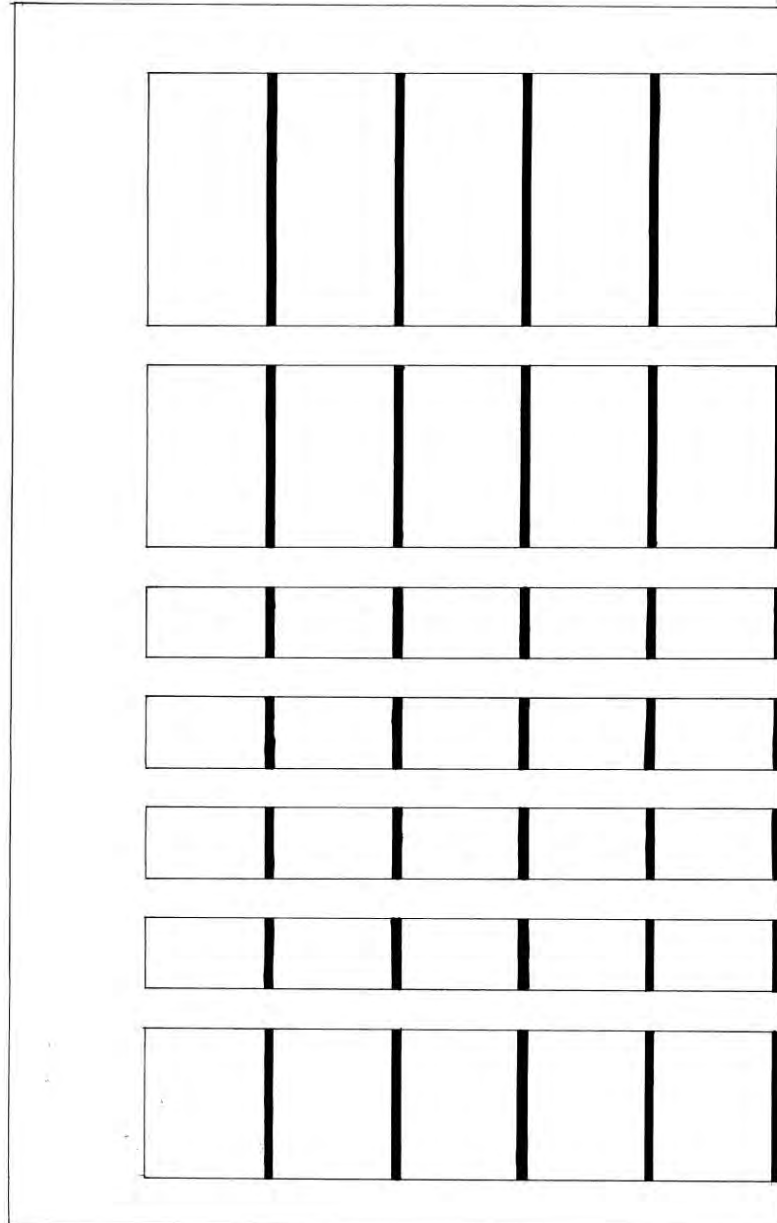
ŘEZ

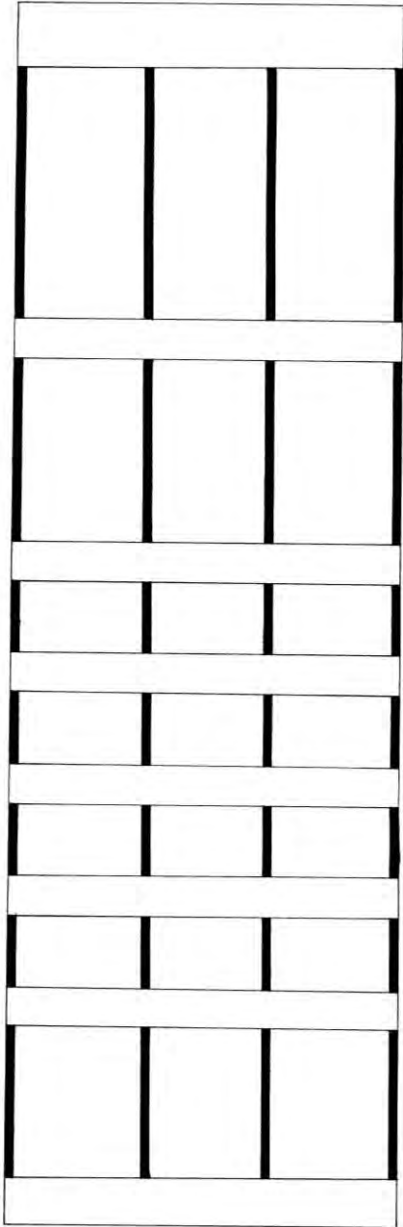
1:100

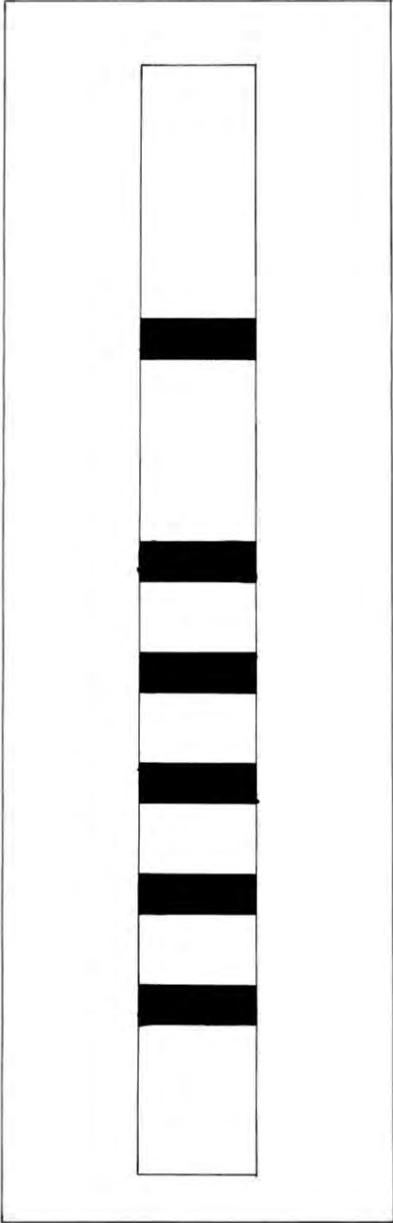


POHLED / FASÁDY

1:100







MODEL 1:50

